



## Foss Island Eco Depot – York

### Project Brief

Re-location of York Council depot and re-development of a new 80,000 sq ft retail park.

### Project Summary

Construction of new offices and workshops for the City of York Council. Decanted the City of York maintenance works depot staff into new premises

### Key Companies

Mowlems, John Harris Partnership, Halcrow Yolles, WYG, Yorkshire Forward, Stace LLP

### Project Value

In the region of £5m

### Project Commenced

2007-08

### Project Duration

14 Months

### Project Size

120,000 sq ft

### Form of Contract

JCT Design and Build 1980 Edition

## Project Overview

### Client

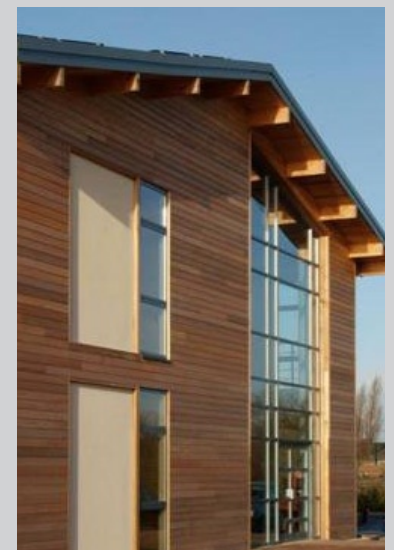
City of York Council and Keyland Gregory

### Location

Foss Island, York

### Market Sector

Offices / Public Sector



This project was delivered by an Aspect 4 Director whilst in the employment of Stace LLP